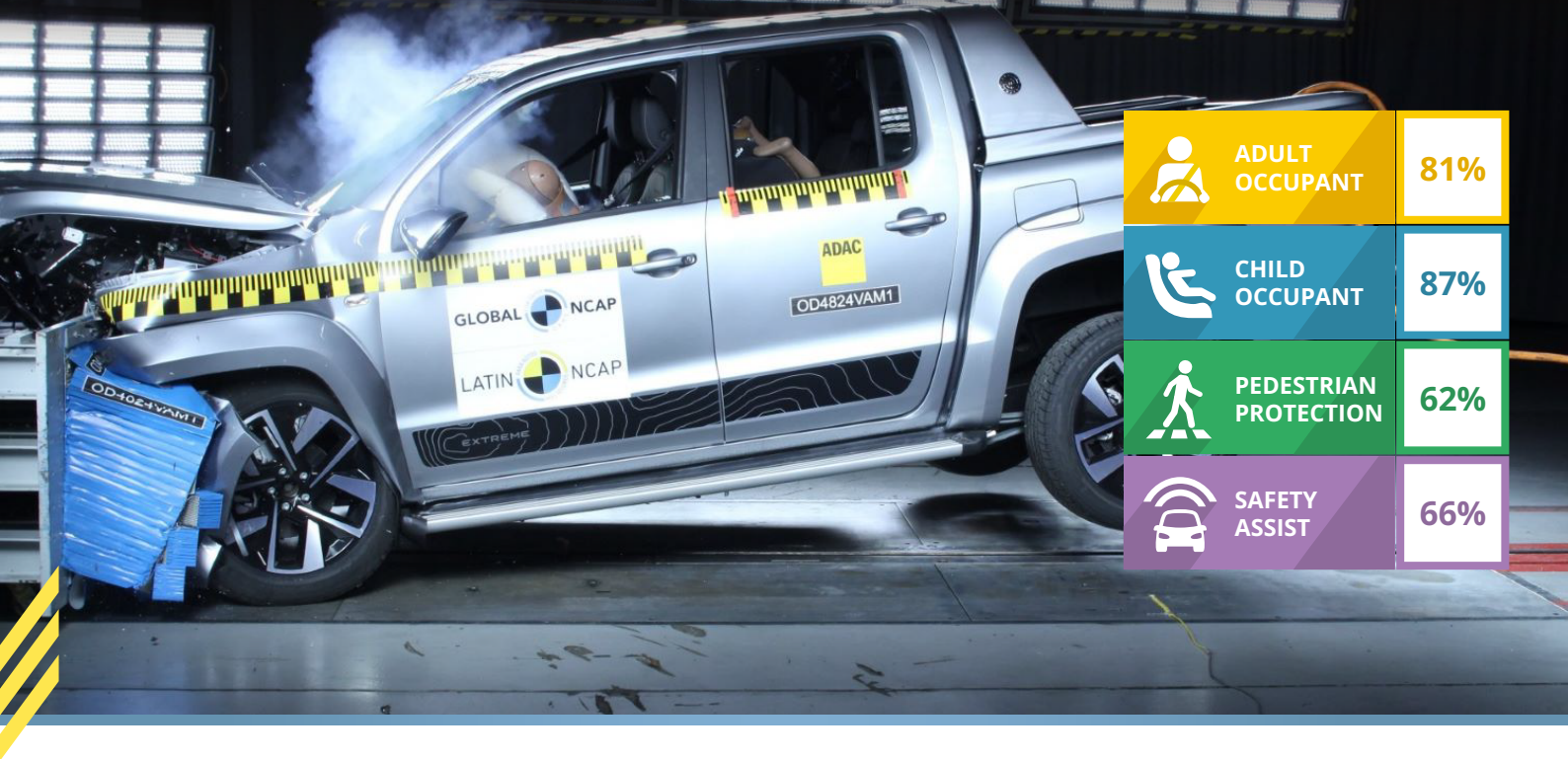


Volkswagen New Amarok + 6 Airbags



	ADULT OCCUPANT	81%
	CHILD OCCUPANT	87%
	PEDESTRIAN PROTECTION	62%
	SAFETY ASSIST	66%

SPECIFICATIONS

Tested model	New Amarok
Body type	4 door pick up
Year of publication	2024
Crash test weight (KG)	2491
VIN from which Rating applies	
Made in	Argentina
Test valid for	Latin NCAP market

SAFETY EQUIPMENT

	DRIVER	PASSENGER	REAR
FRONTAL CRASH PROTECTION			
Frontal airbag	YES STANDARD	YES STANDARD	NOT APPLICABLE
Belt pretensioner	YES STANDARD	YES STANDARD	NOT AVAILABLE
Belt Loadlimiter	YES STANDARD	YES STANDARD	NOT AVAILABLE
Knee airbag	NOT AVAILABLE	NOT AVAILABLE	NOT APPLICABLE
SIDE CRASH PROTECTION			
Side head curtain airbag	YES STANDARD	YES STANDARD	YES STANDARD
Side head (thorax head) airbag	NOT AVAILABLE	NOT AVAILABLE	NOT AVAILABLE
Side Chest airbag	YES STANDARD	YES STANDARD	NOT AVAILABLE
Side pelvis airbag	NOT AVAILABLE	NOT AVAILABLE	NOT AVAILABLE
CHILD PROTECTION			
ISOFIX	NOT APPLICABLE	NOT AVAILABLE	YES OUTBOARD SEATS
Integrated CRS	NOT APPLICABLE	NOT AVAILABLE	NO
Airbag cut out switch	NOT APPLICABLE	YES MANUAL	NOT APPLICABLE
SAFETY ASSIST			
Seat Belt Reminder (SBR)	YES STANDARD	YES STANDARD	YES STANDARD
OTHER SAFETY SYSTEMS			
ESC standard	YES STANDARD		
GTR 9 - UN 127 Pedestrian protection	MEETS UN127 STANDARD		
AEB Pedestrian	NOT AVAILABLE		
AEB City	NOT AVAILABLE		
AEB inter-Urban	NO-JUST OPTIONAL		
Speed Assist System	NOT AVAILABLE		
Lane Assist system	NO-JUST OPTIONAL		



## ADULT OCCUPANT

32.35 points / 80.87%

### FRONTAL OFFSET DEFORMABLE BARRIER

13.1 p



FRONTAL DRIVER



FRONTAL PASSENGER

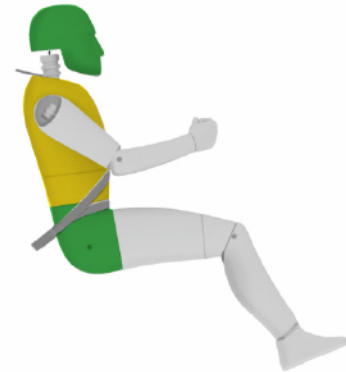
### WHIPLASH REAR IMPACT

1.91 p



### SIDE MOVABLE DEFORMABLE BARRIER TEST (car)

8.00 p



PROTECTION



GOOD



ADEQUATE



MARGINAL



WEAK



POOR

### SIDE POLE IMPACT TEST (Pole)

this test is only performed if side head impact protection is present, otherwise it scores 0

7.32 p

UN R32 (max 1 point)

1

AEB City (max 3 points)

NO TEST

Rescue Sheet (max 1 point)

1

FUEL LEAKAGE DETECTED IN ANY TEST CONFIGURATION

NO



## ADULT OCCUPANT

32.35 points 80.87%



### COMMENTS

**Adult Occupant - Frontal impact:** The protection offered to the driver and passenger head and neck was good, Driver's chest showed marginal protection and passenger's chest showed adequate protection. Driver's and passenger's knees showed good protection. Passenger's left tibia and driver's right tibia showed adequate protection, while driver's left and passenger's right tibias showed good protection. Footwell area was rated as stable. The bodyshell was rated as stable and it is capable of withstanding further loadings. **Side impact:** Head, abdomen, chest and pelvis protection was good. **Side Pole Impact:** head, and pelvis protection was good, abdomen and chest protection was adequate. **Whiplash:** the seat showed marginal protection to the adult neck. **UN R32:** the car proved to meet the rear impact structure requirements. **AEB City:** the car offers FCW (Forward Collision Warning) system but does not score in AEB City. **Rescue sheet:** available according to Latin NCAP criteria.



# CHILD OCCUPANT

Crash Test performance based on 3 and 1.5 years old children

42.67 points 87.08%

## CHILD RESTRAINT SYSTEM

Dynamic score:  
22.67 (max 24)

Installation score:  
12.00 (max 12)

Vehicle assessment score:  
8.00 (max 13)

CHILD RESTRAINT		DYNAMIC SCORE	CRS TYPE	ADJUST	POSITION
18 month old child	Joie i-Spin	Front 6.67 (8 max) Side 4.00 (4 max)	0+/I	ISOFIX/LEG	RWF
3 year old child	Joie i-Spin	Front 8.00 (8 max) Side 4.00 (4 max)	0+/I	ISOFIX/LEG	RWF

	Front Passenger	2nd row outboard	2nd row centre
ISOFIX	NOT AVAILABLE	YES STANDARD	NOT AVAILABLE
I-Size	NOT AVAILABLE	NOT AVAILABLE	NOT AVAILABLE
Integrated CRS	NOT AVAILABLE	NOT AVAILABLE	NOT AVAILABLE

## CRS INSTALLATION ASSESSMENT

REFERENCE LIST			2ND ROW			
			RIGHT	LEFT	CENTER	RIGHT
Group 0+	Peg Perego Viaggio Switchable		●	●	●	●
Group 0+	Roemer Baby Safe		○	●	○	●
Group 0+	Bébé Confort Streety Fix / Maxi Cosi Citi SPS		●	●	●	●
Group I	Peg Perego Viaggio Switchable FWF		●	●	●	●
Group I	Graco Cadeira Nautilus FWF		●	●	●	●
Group II/III	Burigotto Multipla 1,2,3		●	●	●	●
Group II/III	Graco Cadeira Nautilus		●	●	●	●
MANUFACTURER			RIGHT	LEFT	CENTER	RIGHT
Q1.5	Joie i-Spin	ISOFIX/LEG	○	●	○	●
Q3	Joie i-Spin	ISOFIX/LEG	○	●	○	●

● Pass

✗ Fail

○ Exempt

\*Fail only due to failed marking



# CHILD OCCUPANT

42.67 points 87.08%



## COMMENTS

**Child Occupant** - The child seat for the Q1.5 child was installed rearward facing using ISOFIX anchorages and support leg. It was capable of preventing head exposure but showed higher than expected chest deceleration. The 3-year-old child was installed rearward facing using ISOFIX anchorages and support leg and it was capable of preventing head exposure offering full protection. **Side Impact:** Both CRSs offered full protection. All of the CRSs tested for installation passed. The car has ISOFIX anchorages as standard. All seating positions are equipped with three point seatbelts. Airbag warning when a rearward CRS is installed in the passenger seat meets Latin NCAP requirements. The car has passenger airbag disconnection via manual switch as standard.



PEDESTRIAN PROTECTION (pasive)

29.85 points

The car meets regulation UN 127 for pedestrian protection



	Points	Max score
Head impact	17.85	24
Upper Leg impact (Pelvis)	6.00	6
Lower Leg impact (Leg)	6.00	6

AEB PEDESTRIAN

NO TEST

Balance factor for Pedestrian protection (until 2022) -

Name of System	-
speed range Minimum (km/h)	-
speed range Maximum (km/h)	-

PERFORMANCE

Summary	Percentage
Adult Running, farside, 50%	-
Adult Walking, nearside, 25%	-
Adult Walking, nearside, 75%	-
Child Running, nearside oscured, 50%	-
Human Machine Interaction	-



**Pedestrian Protection** - The car proved to meet Pedestrian protection UN127 regulations. The car showed majority of head impact areas with adequate and good protection with slight marginal areas and very few weak head protection towards the front edge of the hood. Upper leg and lower leg performance showed good protection. **AEB VRU:** Not available for the model.

SPEED ASSISTENCE (this feature scores only if it is standard in all versions)	NO TEST	SEAT BELT REMINDER (this feature scores only if it is standard in all versions)	10.00 points
--	---------	--	--------------

Warning	Driver	Passenger	Rear Passenger
Visual	✓	✓	✓
Audible	✓	✓	✓

LANE SUPPORT SYSTEMS	NO TEST
LDW is available according to Latin NCAP requirements LKA is not available according to Latin NCAP requirements	

System Name	-	PERFORMANCE	
Functionality	-	LKA Test	-
Operational from (km/h)	-	LDW Test	PASS
Warning	-		

ROAD EDGE DETECTION (this feature scores only if it meets the fittment rates required)	NO TEST
-	

BLIND SPOT DETECTION (this feature scores only if it meets the fittment rates required)	NO TEST
BSD is not available according to Latin NCAP requirements	

ESC	15 points
ESC IS STANDARD IN ALL VERSIONS ESC Meets regulatory requirements of Latin NCAP	

MOOSE TEST - for information only - no scoring

ADAC MOOSE TEST	
Max Speed Achieved in test without failures (km/h)	95

MOOOSE TEST: CONSUMER TESTING	
Max Speed Achieved in test without failures (km/h)	80

AEB Interurban (this feature scores only if it me points ets the fitment rates required)	2.50 points
System Name	FCW
Functionality	FCW
Operational from (km/h)	30

PERFORMANCE		
	AEB	Driver Reacts to warning
Operational Speed (km/h) Min   Max	-	30 km/h - 250 km/h
Approaching a slower moving car	-	Crash avoided up to 70 km/h

FOLLOWING A CAR AT SHORT DISTANCE		
	AEB	Driver Reacts to warning
Car in front brakes gently	-	Mitigation
Car in front brakes harshly	-	Mitigation

FOLLOWING A CAR AT LONG DISTANCE		
	AEB	Driver Reacts to warning
Car in front brakes gently	-	Mitigation
Car in front brakes harshly	-	Mitigation

SAFETY ASSIST

28.50 points 66.28%

COMMENTS

**Safety Assist - SBR:** The car offers SBR in all seating positions. **ESC:** The car offers ESC as standard. The Moose test performance reached a maximum of 95 km/h under ADAC Moose test and 80 km/h under Consumer magazine Moose test. **SA:** the car does not offer a speed limitation device. **BSD:** The car does not offer BSD. **LSS and RED:** The car offers LDW only, without active action to return the car to the lane. The LDW system showed good performance and it meets Latin NCAP availability requirements. **AEB Interurban:** The car offers FCW (Forward Collision Warning) with good performance and meet Latin NCAP availability requirements.